



NEWSLETTER

MARCH 2015

SHOWCASING THE GALA



*Premier
Fundraising Gala*

*Featuring the music of
Ted Dwyer "The Sound of Music" &
"The Sound of Music Live!" Entertainment"*

SOLD OUT!!

*Enjoy a four course
Fabulous Dinner*

An illustration of a black top hat, a large diamond necklace, and a white high-heeled shoe, all set against a dark background with stars.



ClayTreeED

Well that was a night!!!! The Formal Gala we held on March 7th at the VIU was a blast, attended by our MLA's the Mayor and council and our funders from CLBC we partied till the early hours, raising over 13k in the process. My thanks to the Gala committee and also Ted Dawes, Todd on DJ, Margie with the photography and chef Jason and the team it was truly a night to remember. Have a look at all the photos of the night and remember to look out for the Early Bird Special for the next one. The cafeteria at the VIU was transformed into a wonderland by Liz Butterfield our Events Planner from Victoria and the lights donated for the evening by Travis Armstrong added to the whole ambience of the evening. It was a sell out event and we will be talking about it for many weeks to come.

Our new program Connections is starting after Easter and as you know this will run Monday to Friday from 3.p.m. till 6p.m. you can book your participant on any of the days and we will be issuing further information over the next week or so, this will be a great activity based program and hopefully helpful to the families and caregivers whilst giving some excitement to the end of the day for the participants. Just telephone Cassie on reception and let her know if you are interested.

I hope that you continue to enjoy the beautiful weather and watch how our gardens and grounds are transformed over the next few months.

Regards,

Glenys Patmore





SAVE THE DATE



Come one Come all! A date has been set for the AGM.
Wednesday June 24, 2015

At the Cavallotti Lodge - 2060 East Wellington Road, Nanaimo
Doors open at 5:00 pm – meet & greet refreshment reception
Annual General Meeting to start at 7:00 pm.



CLAY WORKS

At the beginning of the year the Bridges and Ventures Programs registered for a 6 week Clay Works class offered by The City of Nanaimo through Parks, Recreation and Environment. The weekly one hour class with ongoing instruction and demonstration allowed everyone to create and embellish a new project each Tuesday. Some of these included fish wall hangings, trinket boxes, mugs, utensil holders and small plant containers. Five clay works pieces were created with the final day set aside to apply the colouring before being fired.



CLAY TREE SOCIETY GARDEN AND GROUNDS DAY

The next gardening day will be Sunday April 19th, 2015 from 8:30 am – 12:30 pm. We will continue to work on the front flower beds and will be planting some plants that will add a splash of colour. Please bring your gardening tools and gloves.



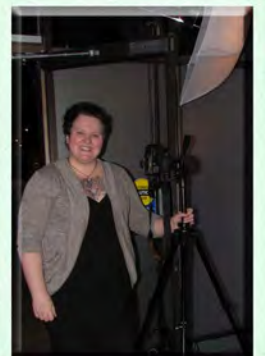
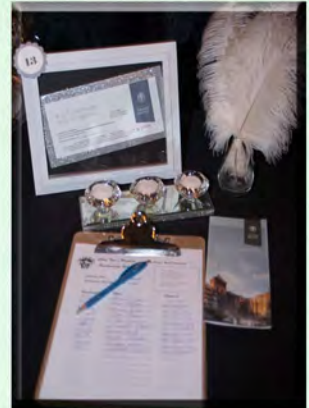
Contact Ken Armstrong at:
250-390-3302 or kjma6457@gmail.com
to confirm attendance or if you have any questions





SAINT PATRICK'S DAY DANCE







HAPPY BIRTHDAY 

March

- 13th **Melissa Lohr**
- 24th **Richard McLellan**
- 13th **Janine Gibson**
- 24th **Kaelin Britten**
- 27th **Mary Feron**
- 30th **Richard Cottle**

CLAY TREE CLOSURE DATES:

- Friday April 3rd, 2015 – Good Friday**
- Monday April 6th, 2015 – Easter Monday**
- Monday May 18th, 2015 – Victoria Day**



EVENT DATES:

Wednesday June 24th, 2015 – AGM @ Cavallotti Lodge

CONTACT US:
 838 Old Victoria Rd, Nanaimo, B.C. V9R 6A1
 250-753-5322
 claytree@shaw.ca

**Please send us your email address,
 and we make certain you get a
 copy of the latest Newsletter!
 or you can view it online at:
<http://www.claytree.org/media>**





REMINDER MEMBERSHIP 2015

Our members are an essential part of the Society

Are you interested in becoming a member of Clay Tree Society?

We seek your support to help us to continue to provide quality programs and services to people with developmental disabilities in the Nanaimo and surrounding areas, as we have proudly done for the past 58 years.

Anyone can become a member of Clay Tree Society by simply completing the attached membership application form, along with a contribution of your choice (payable to Clay Tree Society) *\$5.00 Minimum*

Clay Tree Society membership entitles you to vote at our Annual General Meeting and other special meetings that may be scheduled throughout the year.

Membership must be in good standing three months prior to the date of the AGM in order to be eligible to vote.

Membership can be purchased at any time during the year, however it will expire on Dec. 31st.



Membership Form

2015

Claytree Society for People with Developmental Disabilities
838 Old Victoria Road, Nanaimo, British Columbia V9R 6A1

Ph: 250-753-5322 Fax: 250-753-2749 Email: claytree@shaw.ca

Name: _____

Address: _____

_____ Postal Code: _____

Phone: _____ Email: _____

Amount \$_____ Please make cheques payable to Clay Tree Society Thank You!